



**19-24 SEPTEMBER 2023**  
**LEE VALLEY WHITE WATER CENTRE**

**BULLETIN 2**

**July 2023**



## CONTENTS

1	ENTRY & TRAINING DEADLINES.....	2
1.1	Entry Deadlines .....	2
1.2	Participation Fee & Bank Details.....	2
2	VISAS.....	3
3	CARNETS .....	4
4	LONDON ULTRA LOW EMISSION ZONE.....	5
5	TICKETING.....	6
6	CARAVAN & MOTORHOME CLUB POP-UP CAMPSITE .....	6
7	HOSPITALITY .....	6
8	EVENT PARTNERS & SPONSORS .....	7

**EVERY PERSON MATTERS | INNOVATIVE MINDSET | STRIVING FOR EXCELLENCE | DRIVEN BY PURPOSE**



## 1 ENTRY & TRAINING DEADLINES

### 1.1 Entry Deadlines

Training Week 6 to 10 September

- Registration deadline: 9 August 2023
- Please use the ICF SDP system to register (in the competitions section you must untick both boxes at the top of the page for the training week to appear on the event listing)

Official Training 12 to 18 September

- Registration deadline: 16 August 2023
- Please use the ICF SDP system to register (in the competitions section you must untick both boxes at the top of the page for the training week to appear on the event listing)

Competition Entry

- Numerical entries close: 5 August 2023
- Nominal entries close: 9 September 2023

### 1.2 Participation Fee & Bank Details

A Participation Fee of GBP £120 will be charged for each accredited athlete and team official, to cover the duration of the Official Training and Competition phases of the 2023 ICF Canoe Slalom World Championships.

Free accreditation will be provided for the NF President, the NF General Secretary, and ITOs selected by the ICF.

The participation fees must be paid by bank transfer before the arrival at Lee Valley, no other payment method is available.

Account Name: British Canoeing Events Ltd

Sort Code: 20 63 33

Account Number: 7080 3359

IBAN: GB80 BARC 2063 3370 8033 59

Swift/BIC: BARCGB22

When making payments please quote “CSL WC” followed by your country code.

Payments must be made in GBP £. Bank and currency charges must be paid by NFs in addition to the accreditation fee.

If you require an invoice please contact [events@britishcanoeing.org.uk](mailto:events@britishcanoeing.org.uk)

**EVERY PERSON MATTERS** | **INNOVATIVE MINDSET** | **STRIVING FOR EXCELLENCE** | **DRIVEN BY PURPOSE**

## 2 VISAS

British Canoeing have published a visa guide to help nations applying for visas: [Visa Guide](#).

For information on entry to the UK please visit the UK Border Control website: <https://www.gov.uk/uk-border-control>

A UK 'Standard Visitor' Visa will be required for athletes, officials and support personnel from countries which the UK Border Agency has categorised as 'Visa Nationals'.

Individuals can check if they require a UK visa by visiting: <https://www.gov.uk/check-uk-visa>

Individuals should apply as early as possible.

**The dates below are based on an arrival date into the UK of 30/08/2023**

Service	Last Biometric date	Additional cost per application	Processing time	Availability
Standard	09/08/2023	£0	15 working days	All application centres
Priority Service (PV)	26/08/2023	£250	5 working days	Specific application centres
Super Priority Service (SPV)	29/08/2023	£956	next working day	Specific application centres

Please note that not all visa application centres offer PV or SPV services and availability of these 2 services can be found on either:

[Welcome to VFS Global | For Individuals | Home](#) or [TLScontact Service Options](#)

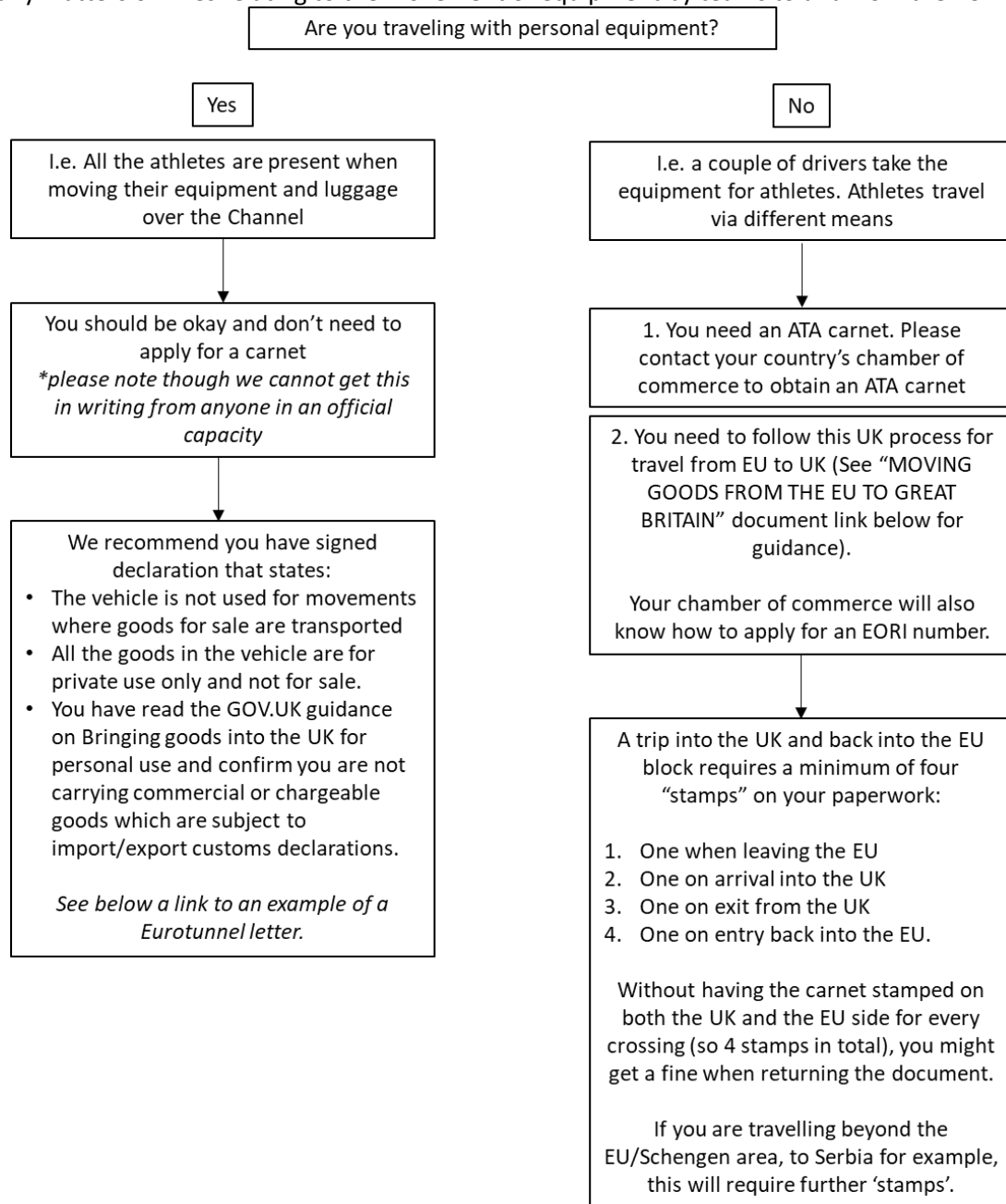
Any participants who plan to travel into the UK before or after 30/08/2023 may find it useful to calculate their individual cut off dates for the above processing services using [Business Date Calculator: Add/Subtract Workdays, Holidays or Weekends \(timeanddate.com\)](#)

British Canoeing will issue an official invitation to athletes, officials and support personnel from National Federations where the participants are listed as 'Visa Nationals'. Please contact [events@britishcanoeing.org.uk](mailto:events@britishcanoeing.org.uk) to obtain a visa invitation.

### 3 CARNETS

Following Brexit, there are rules on moving equipment between Europe and the UK that now need to be followed. We recommend you get an export management company to help or speak to your nation's chamber of commerce for advice.

From the GB team's experience of moving boats and equipment between the UK and Europe, below is our understanding of the processes. Please note though British Canoeing cannot be held responsible for any matters or fines relating to the movement of equipment by teams to and from the EU.



[Eurotunnel letter example](#)

[Moving Goods from the EU to Great Britain guidance document](#)

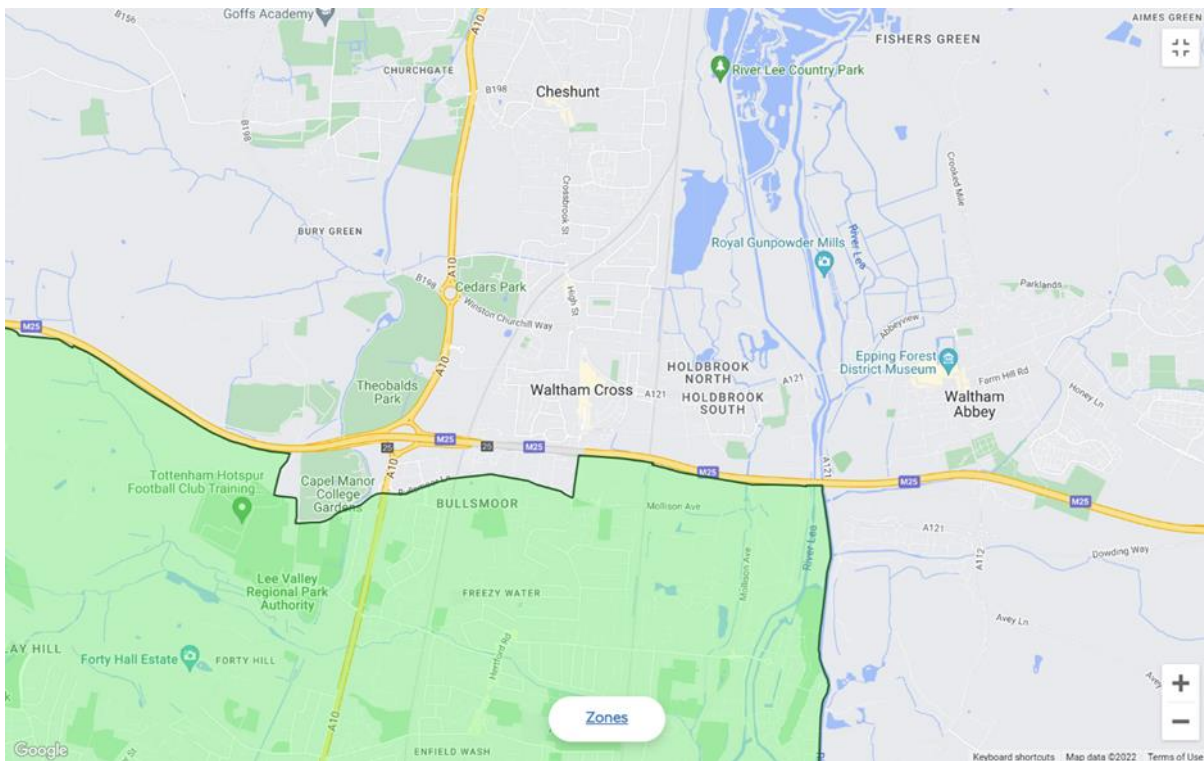
## 4 LONDON ULTRA LOW EMISSION ZONE

To help improve air quality for everyone's health, the London Ultra Low Emission Zone (ULEZ) is expanding from 29 August 2023 across all London boroughs. The value of ULEZ and Congestion Charge penalty charges incurred will increase from £160 to £180 (reduced by 50% if paid within 14 days). ULEZ: Operates 24 hours a day, midnight to midnight, every day of the year, except Christmas Day (25 December)

[Check your vehicle now](#)

Where it will operate

This map shows the new ULEZ boundary and the area it will cover. You can toggle the map to view the Congestion Charge zone, current inner London ULEZ and the new London-wide ULEZ from 29 August 2023.



[ULEZ Expansion 2023 - Transport for London \(tfl.gov.uk\)](https://tfl.gov.uk) allows teams to check their accommodation

**EVERY PERSON MATTERS** | **INNOVATIVE MINDSET** | **STRIVING FOR EXCELLENCE** | **DRIVEN BY PURPOSE**

## 5 TICKETING

Tickets for the World Championships are currently on general sale and we would encourage all teams to book early in advance of the event, to avoid any disappointment of missing out.

Saturday is expected to be a sell-out, so any walk-ups may be turned away if the venue is full.

Added to this, prices at the gate on the day will be higher than the current advertised prices.

To support teams purchasing advance tickets for friends, family, colleagues and supporters planning to visit to Lee Valley, the Organising Committee has created a 10% discount on tickets\* purchased in July.

This ticket offer for international teams is available here using this exclusive link.

<https://slalomworldchampionships.seetickets.com/event/2023-icf-canoe-slalom-world-championships/lee-valley-white-water-centre/2466721?offercode=icf>

The code, if asked, is ICF

\*This advance ticket offer includes:

- day event passes: providing unlimited access across the duration of the event
- 2 day weekend passes: providing access on Saturday and Sunday
- Day tickets for individual finals days on Friday, Saturday and Sunday

The advanced ticket offer is available for teams until **Monday 31 July**.

## 6 CARAVAN & MOTORHOME CLUB POP-UP CAMPSITE

The World Championships will see a bespoke pop-up campsite built on venue at the adjacent Showground for visitors and paddling fans to take advantage of, meaning they will be a stone's throw away from the live action.

The pop-up campsite will cater for motorhomes, caravans, campervans as well as tents, and will have all the usual high-end facilities as to be expected of a Caravan and Motorhome Club site, with showers, toilets, fresh water and waste disposal, electric hook up and a warm welcome.

The campsite will be the perfect base for spectators. [Touring pitches are available from £48, find out more about the offer and book your spot here](#)

## 7 HOSPITALITY

VIP hospitality packages are available for the World Championships through our partner Diamani. Prices start at £125 and can be purchased at:

<https://www.daimani.com/global/en/Sports/Canoeing/2023-ICF-Canoe-Slalom-World-Championships/c/DA00003786>

EVERY PERSON MATTERS | INNOVATIVE MINDSET | STRIVING FOR EXCELLENCE | DRIVEN BY PURPOSE

## 8 EVENT PARTNERS & SPONSORS

### Event Partners



### Official Partners



EVERY PERSON MATTERS | INNOVATIVE MINDSET | STRIVING FOR EXCELLENCE | DRIVEN BY PURPOSE

