

2022 ICF Canoe Slalom World Cup Krakow, Poland Team Leaders Meeting

1.	Welcome.....	2
2.	Roll call of National Federations.....	2
3.	Competition Officials.....	2
4.	Approval of the agenda	3
5.	Questions about «2022 Rules and Rules Appendices»	3
6.	2022 ICF COVID19 Protocol	3
7.	Information during the competition – WhatsApp group	3
8.	Canoe Slalom - Provisional start list review	3
9.	Course information	3
10.	Competition schedule.....	3
11.	Demonstration runs.....	4
12.	Course approval.....	4
13.	Canoe Slalom events – race information	5
14.	Extreme Kayak events – race information	8
15.	Key areas during competition.....	12
16.	Green Box - Athlete’s video for sport presentation	13
17.	Functions	14
18.	ICF Subjects Prevention of Harassment and Abuse in Sport (PHAS)	14
19.	Athletes and teams meeting – Krakow.....	15
•	Appendix 1 – Venue map.....	17
•	Appendix 2 – Demonstrators / forerunners	18

#ICFslalom

1. Welcome

2. Roll call of National Federations

Calculation of simple majority should a vote be required. Chief Official also has a vote and in case of a tied vote the Chief Official has the casting vote.

Number Of Nations present: possible 32

Majority:

ALGERIA	ALG	JAPAN	JPN
ANDORRA	AND	LATVIA	LAT
ARGENTINA	ARG	MEXICO	MEX
AUSTRALIA	AUS	FYROM - MACEDONIA	MKD
AUSTRIA	AUT	MAURITIUS	MRI
BRAZIL	BRA	NETHERLANDS	NED
CANADA	CAN	NEW ZEALAND	NZL
PEOPLES REPUBLIC OF CHINA	CHN	POLAND	POL
CZECH REPUBLIC	CZE	SENEGAL	SEN
SPAIN	ESP	SLOVENIA	SLO
FRANCE	FRA	SWITZERLAND	SUI
GREAT BRITAIN	GBR	SLOVAKIA	SVK
GERMANY	GER	SWEDEN	SWE
HUNGARY	HUN	THAILAND	THA
IRELAND	IRL	UKRAINE	UKR
ITALY	ITA	UNITED STATES OF AMERICA	USA

3. Competition Officials

Role	Name
Jury Chair	Grzegorz KOTOWICZ (POL)
Jury Member	Daniele MOLMENTI (ITA)
Jury Member	Inaki GOMEZ (SLO)
Competition Director	Zbigniew MIAZEK (POL)
Competition Manager	Marcin KSIAZEK
Chief Official	Sue NATOLI (ICF)
Chief Judge	Elke KLIEVERIK (NED)
Assistant Chief Judge	Colin WOODGATE (ICF)
Technical Organiser	Filip GRENZISZ (POL)
Course designer 1	Nelly TORNANE(ICF)

Course designer 2 CSL	Filip GRENZISZ (POL)
Course designer 2 CSLX	Filip GRENZISZ (POL)

4. Approval of the agenda

5. Questions about «2022 Rules and Rules Appendices»

RULES: https://www.canoeicf.com/sites/default/files/rules_canoe_slalom_2022.pdf

APPENDICES:

https://www.canoeicf.com/sites/default/files/csl_2022_rules_appendices.pdf

6. 2022 ICF COVID19 Protocol

https://www.canoeicf.com/sites/default/files/covid_protocol_icf_april_2022_v1.5.pdf

7. Information during the competition – WhatsApp group



8. Canoe Slalom - Provisional start list review

9. Course information

Name of Course	Kolna venue
Competition Course length	250 m
Competition course drop	4.30 m
Competition course flow	12 m³/s
Water regulation on course	Automatically

10. Competition schedule

- The course is closed following the end of official training (Thursday 16.06.2022 at 14.45) until the end of the competition.
- Version 3 will be posted on ICF competition website by Thursday 16.06.2022 at 10.00 and spread on the Teams Whatsapp group.

11. Demonstration runs

A. Demonstrators / forerunners (detailed list – Appendix 2)

B. Heats course – Thursday 09.06.2022

14:45:00	17:00:00	Heats - Course construction	1	2:15:00	2:15:00
16:30:00	17:15:00	Heats - Course tuning with demonstration runners	1	0:45:00	0:45:00
		Interval			0:15:00
17:30:00	17:46:00	Heats - full length demo run 1 & rehearsal	8	0:02:00	0:16:00
17:46:00	17:56:00	Heats - Course approval	1	0:10:00	0:10:00
		Interval			0:04:00
18:00:00	18:16:00	Heats - full length demo run 2 & rehearsal	8	0:02:00	0:16:00
		Interval			1:14:00
19:30:00	19:30:00	Water OFF	1	0:00:00	0:00:00

C. Semi-final / Final course – Friday 10.06.2022

17:30:00	19:00:00	Semi final / Final - Course construction	1	1:30:00	1:30:00
18:30:00	19:15:00	Semi final / Final - Course tuning with demonstration runners	1	0:45:00	0:45:00
		Interval			0:15:00
19:30:00	19:46:00	Semi final / final - full length demo run 1 & rehearsal	8	0:02:00	0:16:00
19:46:00	19:56:00	Semi final / Final - Course approval	1	0:10:00	0:10:00
		Interval			0:04:00
20:10:00	20:26:00	Semi final / Final - full length demo run 2 & rehearsal	8	0:02:00	0:16:00
		Interval			0:44:00
21:10:00 :00	21:10:00	Water OFF	1	0:00:00	0:00:00

12. Course approval

- Call for nomination from the Coaches/Team Leaders to be an “observer” to the Course Approval Committee

Team leader representative	Julien BILLAUT (AUS)
----------------------------	-----------------------------

- Course approval will take place immediately following the demonstration runs at the end of the course by the lower bridge.

#ICFslalom

13. Canoe Slalom events – race information

A. Course design timetable

- The course map will be distributed from the Sport Information Office, and spread on the What's app group on Thursday 16.06.2022 at 15.00.

B. Bibs distribution

- CSL Competition bibs will be available from the Sport Information Office from 12.00 on the Thursday 16.06.2022.
- Athletes can keep their CSL bib.
- The bibs are allocated in the following way:

WK1 - GREY	WC1 - RED
	
MK1 - GREEN	MC1 - NAVY
	

C. Technical Video Service for CSL events

- A TVS feed will be available for all events and both demonstration runs.
- Only the download solution will be available. Each Nation tent will be equipped with their own download cable.
- Please enable the option "Automatic (DHCP)" – Mark ABBOTT can assist with this
- Address to use to download videos: <http://cis.siwi>
- Be aware the first access to <http://cis.siwi> may take a bit longer, sometimes 1-2min.

#ICFslalom

- It is important the WLAN is not activated (off) not only "not connected" to a WLAN-network
- All devices must be connected at the testing time, 14:00 Thursday, so we know the system works under the full load.
- Wireless routers may be used if they are **NOT** within the following frequency
 5785 GHz, band width +/- 20 MHz
 5825 GHz, band width +/- 20 MHz.
- Any wireless device in these frequencies may affect the delivery of the competition
- At no time should any wireless router system be connected to the computer which is connected to the TVS lan cable
- All devices, including any wireless routers, must be named with National Federation code and device number eg AUS1, AUS2, AUS3 – unnamed devices will be removed from the system
- Any team found to be using a device affecting the competition will have power removed to their compete system

For any assistance with this please contact Mark ABBOTT – ICF TVS Co-ordinator

D. Pre-start procedure

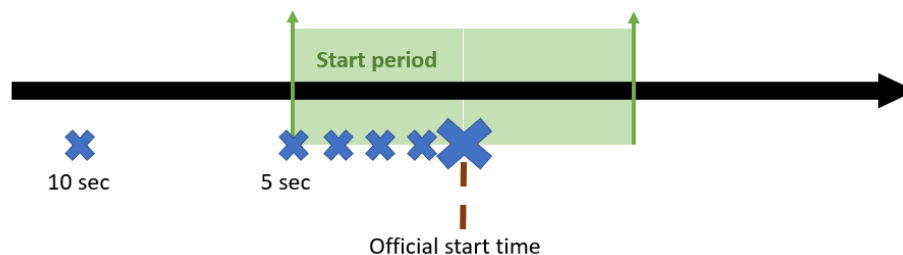
- There will be a clock facing upstream on the back of the CSLX platform showing the race time and the next athletes to start.

E. Start



#ICFslalom

- Athletes may move to the start position once the previous Athlete has broken the beam but must be at the start position 15 seconds before their start.
- The start is located in the left of the channel under the extreme kayak ramp.
- Athletes must start facing downstream in front of the backdrop.
- The athlete must back into the start position. Athletes should be careful not to break the beam line as they back into the start position
- At the start, there will be a countdown clock showing the time to start. There will be an acoustic signal (10 seconds before start - 4 shorts, 1 long - start).
- Athletes may start 5 seconds either side of their official start time which is signified by the long beep on the start clock



- The beam line is located approximately 2 meters downstream of the start position.
- At all times, the athletes must follow the Starter's instruction, or they may be disqualified for the run.

F. Finish

- The finish beam is located above the last concrete point.
- The beam line is indicated with blue posts.
- Athletes must exit via stairs at the end of the course on river left to pass through equipment control, kiss and cry and the mixed zone.
- During the finals, the leading and second athlete must proceed to the "Kiss and Cry" area located after equipment control where TV will interview them.
- There will be access to the broadcast feed in this area. If they drop out of the lead the new leader will replace them.



- Athletes must not leave the finish zone until dismissed by the Equipment Control Judge once they are no longer needed for the ceremonies, anti-doping or equipment control.
- They then proceed via the mixed zone back to the Athlete area.
- Athletes should wear their Competition bib in the mixed zone for identification purposes

14. Extreme Kayak events – race information

A. Course design timetable

- The Extreme Kayak course map (time trials & final phases) will be distributed at the Sport Information Office, and spread on the Whatsapp on Friday 17.06.2022 at 15.00.

B. Bibs

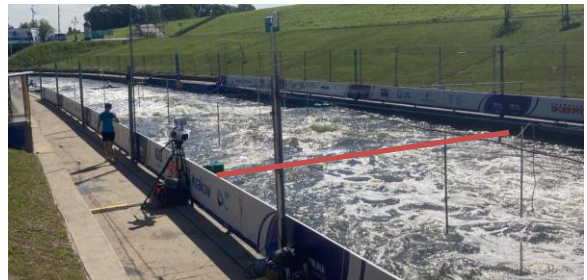
- For time trials, Athletes bibs will be distributed from sport information office. These need to be returned following the time trials, to the HOC office, in the containers near the exit steps, after the athlete has finished the TT.
- For the elimination phases the Athlete bibs will be distributed from HOC office, in the container near the exit steps, available by 12:00 Sunday
- All CSLX bibs must be returned to the HOC office, in the containers near the exit steps, following the competition.
- For lost or non-returned bibs the NF will be charged 50€/bib.





C. Start & Finish line

- The start photocells will be located on the ramp and indicated on the course map.
- The finish line for time trials will be approximately 30m above the CSL finish line and will be indicated on the course map.



D. Time trials

- Time trials will be run with gates.
- Athletes must start from lane 2 on the platform for the Time Trials
- Timing will be done via photocells.
- Start from the start platform using the start clock
- No "Ready, Go".
- Athletes are exceptionally permitted to use their slalom helmet and paddle for the time trials
- Athletes must wear long sleeves for all phases

E. Elimination phases

Pre-start procedure

- Athletes need to be at the start area 30 minutes prior to their heats to prepare their boats and receive final instructions.
- Athletes may warm up in their own CSLX or a CSLX boat provided by the organiser.
- Access to start ramp will be from the left bank.

Start Procedure

- Athletes should be settled in the start position on the ramp 90 seconds before their start time. There will be volunteers to assist them if needed.
- They should then listen to the sports presentation where they will be introduced to spectators.
- During this time, they should face the TV camera. At all times they should follow the starters instructions.
- The start position is with one hand on the ramp and one hand on the paddle in a vertical position, to allow athlete to push off to start.

Finish

- After crossing the finish line gather with other paddlers from your run (for TV) and then exit via kiss and cry zone.
- Please return the boat, helmet and spraydeck to the start along the road on the shuttle provided.
- There will be a person at the start to inform you if you have progressed or not.

Rules reminder

- Minimum weight 18kg. Athletes responsibility to check the boat is the correct weight. Random post competition Equipment Control during the time trials. During the elimination phase all boats will may be checked for weight.
- Helmets on ICF list, there will be small number of helmets to loan see:
https://www.canoeicf.com/sites/default/files/2022_icf_extrem_kayak_helmet_list_v2.pdf
- Buoyancy aid – all buoyancy must be in vest section (above the waist), must meet EN norms etc for further information see:
https://www.canoeicf.com/sites/default/files/2022_extreme_kayak_buoyancy_rules_v1.pdf
- Paddle should not have sharp edges
- In Finals phase the two Athletes who come first in the previous bracket choose their places first (according to their time trial rank) followed by the two Athletes who came second (according to their time trial rank)

- If an athlete falls or their equipment falls from the platform before the "ready", it is a DNS and they are asked to exit from the start platform or the course
- No movement between "Ready" and "Go", otherwise False start
- False start = a Fault (FLT)
- Whole head and both of the shoulders must cross the gate line in the correct direction
- Not permitted to move the gates in an unfair way to disadvantage others = FLT
- Are permitted to "reach across" but not hold back
- No dangerous contact with head or body of other Athletes
- FLT for wrong negotiation, Ranked as lower (RAL) for not following safety measures
- Using a photo finish – ranking is based first on the bow line

For Vote at this meeting

Roll Zone/Barrier

Existing rule:

16.19.5 - The course must contain a marked roll zone or a roll barrier.

16.22.5-For the roll zone, the boat must make a complete 360-degree roll within the marked area.

16.22.6 - For the roll barrier, the boat must make a complete 360-degree roll with the boat starting to roll before the barrier.

For this Competition (Time trials and Elimination phases) we will combine these two rules and operate in the same way as it was done in Prague Competition for the elimination phase.

The proposal is:

16.19.5 - The course must contain a marked roll zone **and/or a roll barrier.**

38 NF present = 18 VOTE for the change => APPROVED

Hands on Paddle

Existing Rule

16.22.3 - Athletes are permitted to touch the gates with any part of their body or equipment.

For this competition Athletes are permitted to touch the gates with their hands only if both hands are on their paddle

The proposal is:

16.22.3.a - Athletes are permitted to touch the gates with their hands only if both hands are on their paddle

38 NF present = 23 VOTE for the change => APPROVED

15. Key areas during competition

See venue map attached in Appendix 1

A. Enquiry / Protest desk

- The Enquiry desk is located in the tent upstream from the OVR next to the containers at the end of the course.

B. Equipment control

- Equipment Control is located near the OVR on the left bank.
- Self-checking is open: Thursday 16.06.2022 from 10:00 to 15.30.
- Emergency self-checking: Equipment control will be open each day 1h before the 1st boat starts.
- There will be post competition control and random checking during the whole competition.

C. Medals ceremonies

- Location: podium at the grass area in the middle of the course
- Schedule: see competition schedule, after each session of final
- Finalist must ring the uniform to the ceremony area and be prepared to move quickly to the ceremony

D. Doping control station

- The doping control station is located on the first floor of the boathouse building adjacent to Kolna.
- Athletes will be notified for Doping Control in the finish zone.

E. National Federations parking

- National Federations may park in the Kolna carpark without a parking pass.
- National Federations may drive to the top of the channel and park at area 14 – you need parking pass for this area.
- National Federations are allowed to have one car per Federation to drive adjacent to the Team Tents (area 13). This car may remain parked in this location
- Parking passes are distributed through the Sport Information Office.
- National Federations can drive along the road inside the course. Please drive slowly because there are many users in this way

F. Athletes' Lounge during competition days

- Snacks, fruit and drinks are available from Athletes' Lounge.

16. Green Box - Athlete's video for sport presentation

The ICF will shoot a short video (8s without sound) of athletes to be used for sport presentation.

The ICF requests the athletes, who have not yet had a video taken, (they have been advised of this directly) to attend this short shooting session (maximum 2 minutes) in their national uniform.

Any other Athletes are welcome to update their video if they wish, when the studio is open and not too busy

The Green Box studio will be in the Meeting Room A in the Kolna Hotel and is open on Thursday from 12:00 – 17:00

17. Functions

Reception –

Wednesday 15.06.2022 from 19:00 to 21:00:

Wielkopolski Palace,

Lea and Kupiecka Chambers

Pl Wszystkich Swietych 3-4,

The busses will depart from Kolna directly following the this meeting at 18:00 - plus short walk – to the palace Busses will return at to Kolna at 9:00

18. ICF Subjects

Prevention of Harassment and Abuse in Sport (PHAS)

A. ICF policy and statement

Prevention of Harassment and Abuse in Sport (PHAS) Policy aims to protect the physical and psychological integrity of the athletes and any other person related to the paddling family.

https://www.canoeicf.com/sites/default/files/icf_safeguarding_phas_policy.pdf

The ICF strongly condemns harassment and abuse in all forms at any time and is committed to preventing this conduct by acting diligently to avoid its occurrence, and inappropriate situations that may give rise to their happening.

B. The policy will be applied during ICF competitions

Suspected harassment and abuse must be immediately reported. The report form is available on the ICF website and will be treated with impartiality and confidentiality.

https://www.canoeicf.com/sites/default/files/icf_safeguarding_phas_report_form.pdf

Local regulations must be followed in all cases.

C. ICF PHAS officer during this competition

Please report any occurrence to the ICF PHAS officer on site: Thomas ROSSET ICF Whitewater Manager <mailto:thomas.rosset@canoeicf.com>

19. Athletes and teams meeting – Krakow

Athlete Meeting

The Athletes meeting will be on Saturday 18 June in the Gym (in the same building as the pool at Kolna) at 14:00 – 15:15

This meeting will be dedicated to a (sorry short) discussion regarding the Extreme Kayak rules

Teams Meeting

We wanted to invite Team Leaders to a meeting dedicated to the Paris 2024 qualification system. But we have realised that all Team Leaders are not present and we have received very few questions to address at this meeting.

So; we will now have a meeting dedicated to Paris 2024 qualification system during the Worlds in Augsburg where all Teams are present.

Please forward any questions you have, to assist preparation for this meeting to Thomas ROSSET at <mailto:thomas.rosset@canoeicf.com>

"Free training" rules

During the "Free Training" session or the "water on and water off" periods, only accredited people recognised as an Athlete for this competition are permitted to train.

Tacem World cup 3 Water level

At this stage we expect training and competition to proceed as plan. ICF is talking with HOC review the situation.

#ICFslalom



Discussion

It was clarified that an athlete competing only in CSLX is able to do demo and full runs in CSL. If teams have people in this category, they should propose them to the ICF technical manager (Thomas Rosset) to see if it is possible.

#ICFslalom

- Appendix 1 – Venue map



#ICFslalom

• Appendix 2 – Demonstrators / forerunners

Thursday 16.06.2022 - Heats - full length run 1 & 2

16:30 Heats - Course tuning with demonstration runners

17:30 Heats course, full length run 1

Bib	Event	Name	Bib	Event	Name
F1	WK1	Zuzanna Cecurska	F5	WK1	Carmen Costa
F2	MK1	Dawid Baster	F6	MK1	Hubert Mazurek
F3	WC1	Alicja Bulera	F7	WC1	
F4	MC1 R	Igor Ludwikowski	F8	MC1 L	Filip Lesniak

18:00 Heats course, full length run 2, rehearsal

Bib	Event	Name	Bib	Event	Name
F1	WK1	Carmen Costa	F5	WK1	Katarzyna Grzyb
F2	MK1	Rafał Polaczyk	F6	MK1	David Llorente
F3	WC1	Alicja Bulera	F7	WC1	
F4	MC1 R	Igor Ludwikowski	F8	MC1 L	Filip Lesniak

Friday 17. 06. 2022

08:45 Forerunners Heats, start interval 1 minute

Bib	Event	Name	Bib	Event	Name
F1	WK1	Zuzanna Cecurska	F2	WK1	Carmen Costa
F3	MK1	Rafał Polaczyk	F4	MK1	David Llorente

14:00 Forerunners Heats, start interval 1 minute

Bib	Event	Name	Bib	Event	Name
F1	WC1	Alicja Bulera	F2	WC1	
F3	MC1 R	Igor Ludwikowski	F4	MC1 L	Filip Lesniak

18:30 Semifinal/Final - Course tuning with demo runners

19:30 Semi final/Final - full length demo run 1 - interval 2 min.

Bib	Event	Name	Bib	Event	Name
F1	WK1	Zuzanna Cecurska	F5	WK1	Carmen Costa
F2	MK1	Dawid Baster	F6	MK1	Hubert Mazurek
F3	WC1	Alicja Bulera	F7	WC1	
F4	MC1 R	Igor Ludwikowski	F8	MC1 L	Filip Lesniak

20:10 Semi final/Final - full length demo run 2 - interval 2 min.

Bib	Event	Name	Bib	Event	Name
F1	WK1	Katarzyna Grzyb	F5	WK1	Carmen Costa
F2	MK1	Rafał Polaczyk	F6	MK1	David Llorente
F3	WC1	Alicja Bulera	F7	WC1	
F4	MC1 R	Igor Ludwikowski	F8	MC1 L	Filip Lesniak

Saturday 18. 06. 2022 – Semi-final / Final – forerunners

08:45 Forerunners K1W, K1M, semifinal/final course, interval 2 min.

Bib	Event	Name	Bib	Event	Name
F1	WK1	Zuzanna Cecurska	F2	WK1	Carmen Costa
F3	MK1	Rafał Polaczyk	F4	MK1	David Llorente

15:40 Forerunners K1W, K1M, extreme kayak course, interval 45 secs.

#ICFslalom

Bib	Event	Name	Bib	Event	Name
F1	WX1	Katarzyna Grzyb	F2	WX1	Zuzanna Cecurska
F3	MX1	Rafał Polaczyk	F4	MX1	David Llorente

Sunday 19. 06. 2022 – Semi-final / Final – forerunners

8:45 Forerunners C1W, C1M Semifinal/Final course, interval 2 min.

Bib	Event	Name	Bib	Event	Name
F1	WC1	Alicja Bulera	F2	WC1	
F3	MC1 R	Igor Ludwikowski	F4	MC1 L	Filip Lesniak

15:15 Forerunners, extreme kayak course – 1 bracket

Bib	Event	Name	Bib	Event	Name
F1	WX1	Carmen Costa	F2	WX1	Zuzanna Cecurska
F3	MX1	Rafał Polaczyk	F4	MX1	Hubert Mazurek

•